

Roof Top PV Rack Mounting System

KIVO

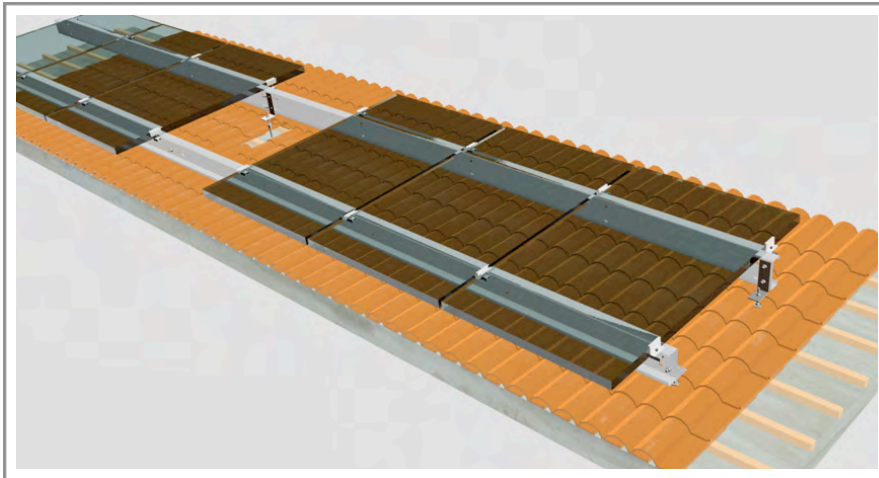
TR

TILE ROOF SYSTEMS

KIVO TR

TILE ROOF SYSTEMS

Roof Mounted Photovoltaic Structures for Tile roof installations, for all available modules.



- KIVO TR
- Flat Roofs
- Anchoring on concrete roof or on the purlins
- 20 Years Warranty
- CE, ISO 9001 TÜV



All KIVO roof components are made of high quality materials (cold roll formed pre galvanized or post galvanized steel profiles) and can be applied to almost every type of roofing.

KIVO TR provides an easy and quick way for a Tile roof installation. Can be mounted by anchoring the support structure to the roof surface with chemical or mechanical anchors,

A minimal distance of 100mm (or more depending on customer's demand) from the roof surface till the module allows sufficient cooling of the solar modules.

KIVO TR

TILE ROOF SYSTEMS

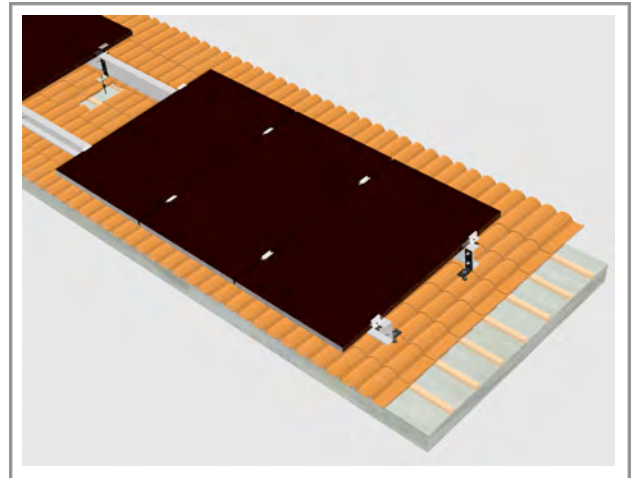
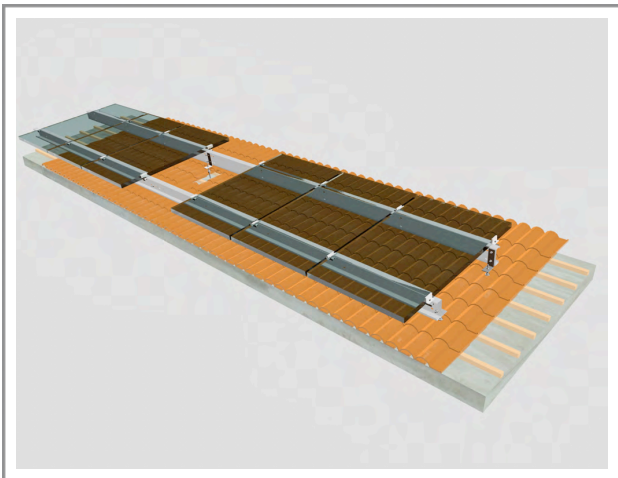
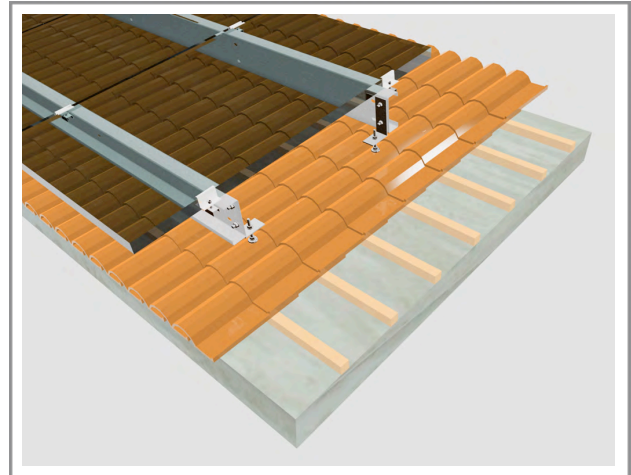
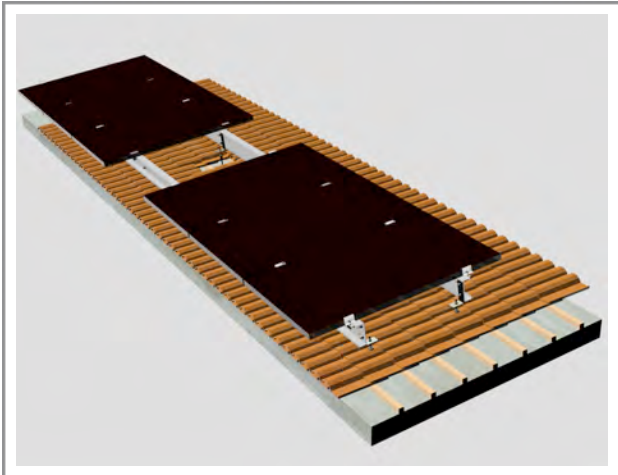
Specifications

Application	Flat roofs
Anchoring on the roof	Anchoring on concrete roof or on the purlins
Soil Classes DIN 18300:	n/a
Material	Cold roll-formed pre galvanized steel profiles according to DIN EN 1327 – S320 + Z, or post galvanized steel profiles
Tilt Angles	Following the roofs inclination
Panel arrangement	Multiple portrait or landscape
Module Compatibility	All available commercial types
Average Installation Rate	Up to 5kw/manday
Accessories: Screw type	Aluminum middle and end clamps: EN AW-6063 T6 grade 8.8 (galvanized) M12 & M8(clamps) and chemical or mechanical Steel anchors EPDM rubber against electrolytic corrosion
Warranty	20 years or 40 years (post galvanized)
Manufacturing Location	Depending on the location of an installation site
Certifications:	CE, ISO 9001 TÜV

KIVO TR

TILE ROOF SYSTEMS

Images



KIVO TR

TILE ROOF SYSTEMS

Design Norms & Standards

Design according to the following Norms:

Eurocode 1: Actions on structures (EC1, ENV 1991 1-1, 1-3, 1-4),

- Part 1-1: General actions – Densities, self-weight and imposed loads
 - Part 1-3: General actions – Snow loads
 - Part 1-4: General actions – Wind actions

Eurocode 3: Design of steel structures (EC3, ENV 1991-1-1, 1-3)

- Part 1-1: General rules and rules for buildings
- Part 1-3: General – Cold formed thin gauge members and sheeting
 - Part 1-8: General – Design of joints
- Part 1-10: General – Material toughness and through thickness assessment

Eurocode 8: Design of structures for earthquake resistance (EC8, ENV 1998-1-1)

- Part 5: Foundations, retaining structures and geotechnical aspects
- Part 1: General rules, seismic actions and rules for buildings
 - National Norms for Earthquake Resistance



SOLAR CUBE
GmbH, Germany

Bahnhofstr. 95, 82166
Graefelfing – Munich, DE

Phone: +49 89 57084105



info@solarcube.com



www.solarcube.com

Click to sign up to our newsletter